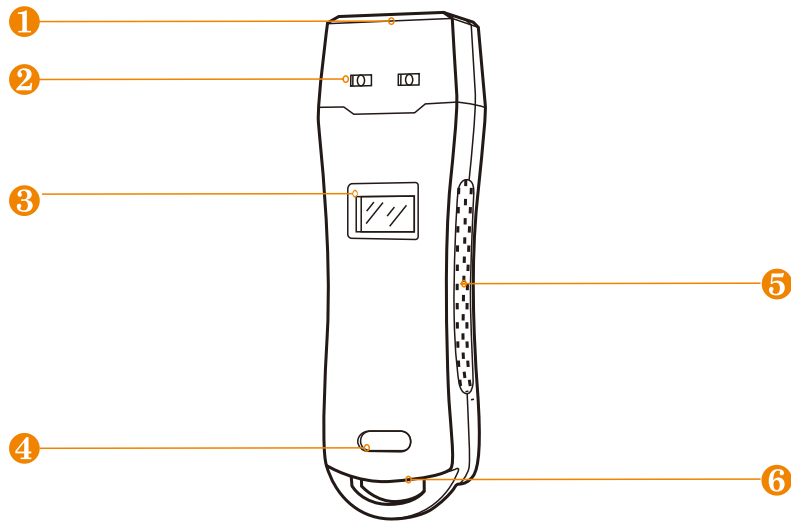




Find Out Who Your Guard's Been Destroying Device!

DISPLAY GUARD TOUR SOLUTION
PROFESSIONAL MANUFACTURER SINCE 1997





Z-6200D

- ① Sensor area
- ② LED indicator
- ③ Display
- ④ Label Area
- ⑤ Anti-slide area
- ⑥ USB port

Benefits



RFID Reading

Through the 125Khz frequency reading the tag, unnecessary to direct touching the checkpoint via Equipment.



Display

Double protection LED display, prompting when scan tag, beating, low battery and communication.



Impact Records

Impact record is a timing when employee beating the equipment, once generated will be permanently stored, administrator can follow this in apportioning blame.



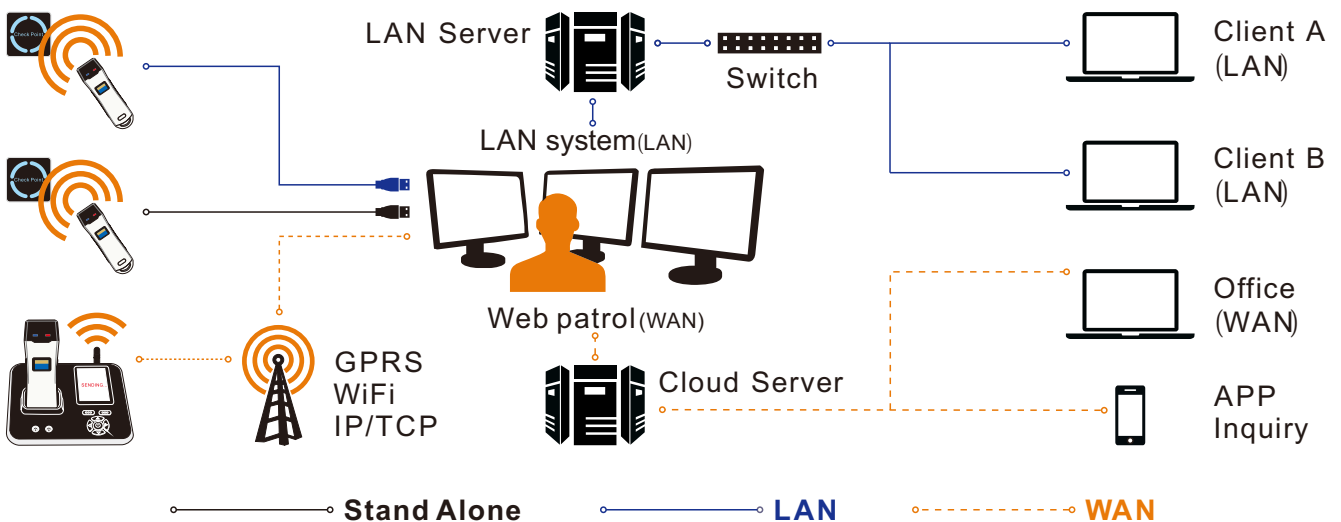
Real Time Data

This function have to use with Z-9200 communication station, the offline data can be delivered to the software in real time through z-9200, currently supports Wi-Fi, GPRS and TCP/IP

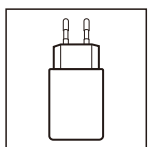
Technical Parameters

Model	Z-6200D
Display	1.8" LCD, can display time, card number, records, impact record, etc
Reading technology	Read 125kHz EM(ID) tags proximity
Material	Aluminum alloy
Storage	80,000 pieces
Impact record	32,000 pieces
Workable temperature	-20 to 70 °C
Workable humidity	30% to 90%
Communication	USB cable
Battery	3.7v built-in rechargeable li-ion battery
Prompt	LED + Vibration
Standard accessories	Data cable, safety protective cover, charger plug, software
Baud rate	115200 bps
Performance	IP 67, waterproof, shockproof
Dimension	130mm x 40mm x25mm
Net weight	170g

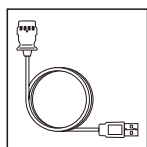
Working Map



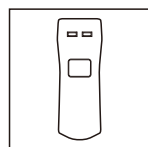
Accessories



Charger



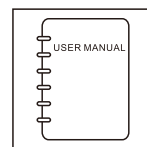
USB cable



Case



Software



Manual